

MODEL 223 CROSSOVER ASSEMBLY

PART NUMBER 12M03-00119-01  
APPLICATION NOTES

1. If an armature voltage higher than 250 volts is required, a 50K divider consisting of two 25K, 5 watt resistors (or one 50K, 10 watt wirewound resistor with center-tap slider) should be connected across the armature. A maximum 250 volt signal from the divider is then applied to terminals 5 and 6.
2. If full isolation from the armature loop is required, use the REFLEX Model 213 Signal Isolator or Model 224 or 242 Current Isolator.
3. The Model 223 Crossover Assembly is connected to the Model 201 Field Firing Assembly and Power Converter as shown in Figure 2.

The Drive Armature Regulator must be configured for Tachometer Feedback. An alternate scheme using the Model 209 Multiplier is available if a tachometer generator can not be used (See Tachless Crossover - Data Sheet DS6200-0101).

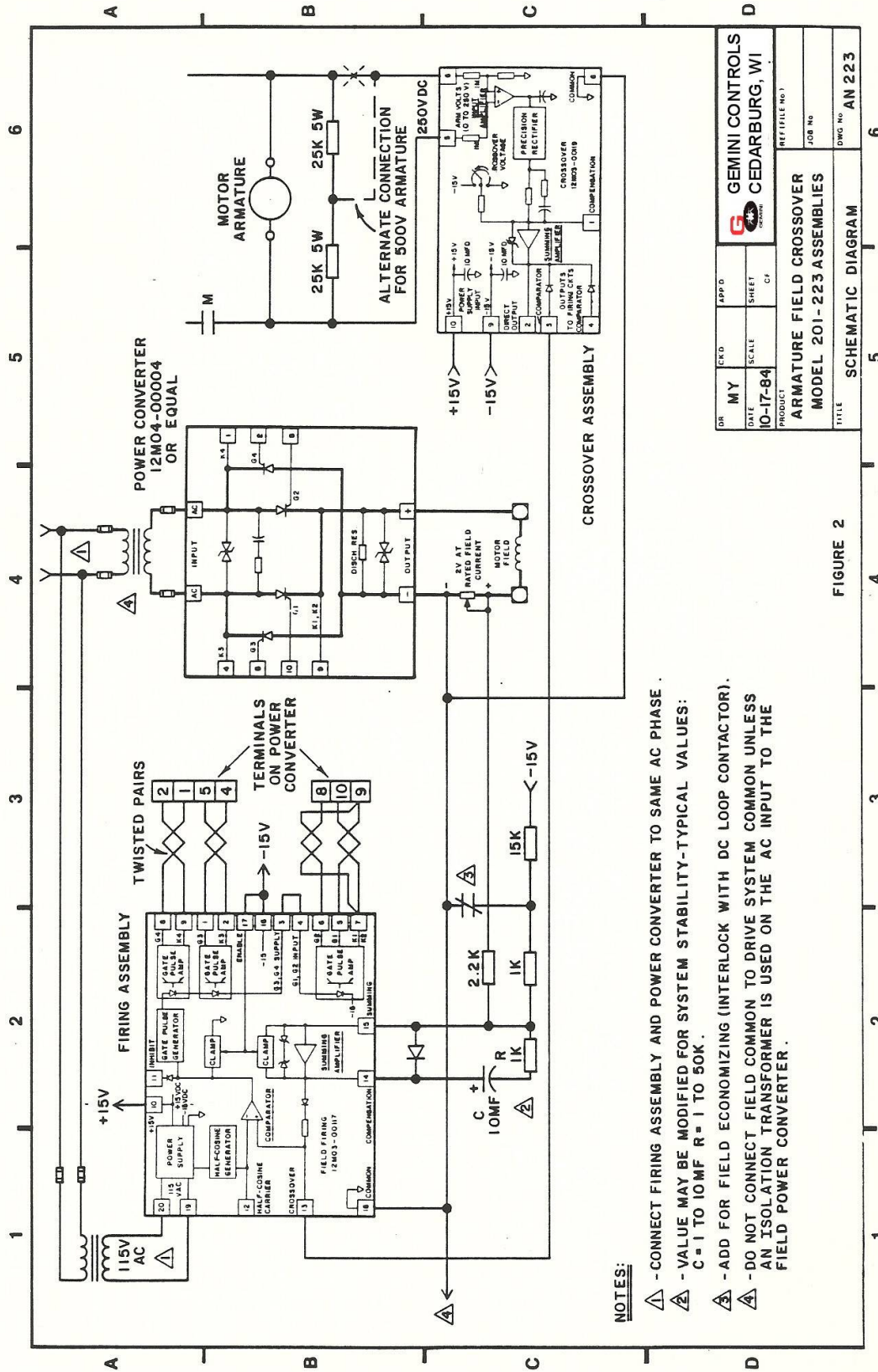
4. To facilitate troubleshooting it is desirable to tie in the common terminals to the Main Drive common.

This must be tied in if the Model 227 Test Meter is used.

AN ISOLATION TRANSFORMER MUST BE USED ON THE AC INPUT OF THE POWER CONVERTER IF ANY PART OF ITS CIRCUITRY IS CONNECTED TO ANY PART OF THE MAIN DRIVE CIRCUITRY.

DO NOT CONNECT COMMON TO EARTH GROUND UNLESS AN ISOLATION TRANSFORMER IS USED!

5. The 115V AC Supply to the Firing Assembly must be from the same AC phase as the AC Supply to the Power Converter.



- NOTES:**
- ⚠ - CONNECT FIRING ASSEMBLY AND POWER CONVERTER TO SAME AC PHASE.
  - ⚠ - VALUE MAY BE MODIFIED FOR SYSTEM STABILITY-TYPICAL VALUES:  
C = 1 TO 10M F R = 1 TO 50K.
  - ⚠ - ADD FOR FIELD ECONOMIZING (INTERLOCK WITH DC LOOP CONTACTOR).
  - ⚠ - DO NOT CONNECT FIELD COMMON TO DRIVE SYSTEM COMMON UNLESS AN ISOLATION TRANSFORMER IS USED ON THE AC INPUT TO THE FIELD POWER CONVERTER.

FIGURE 2

DR	MY	CKD	APP'D	G	GEMINI CONTROLS
DATE	10-17-84	SCALE	SHEET	CF	CEDARBURG, WI
PRODUCT	ARMATURE FIELD CROSSOVER				REF TITLE NO. 1
TITLE	MODEL 201-223 ASSEMBLIES				JOB NO
SCHEMATIC DIAGRAM					DWG NO AN 223



GEMINI CONTROLS LLC  
 W61 N14280 TAUNTON AVE.  
 PO BOX 380  
 CEDARBURG, WI 53012  
 www.geminicontrols.com

PHONE: (262)-377-8585  
 FAX: (262)-377-4920  
 email:sales@geminicontrols.com