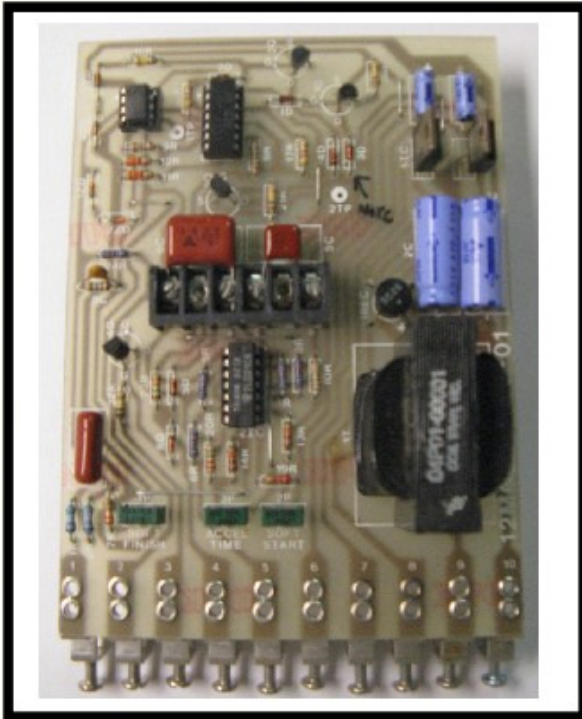


MODEL 238 S-CURVE RAMP GENERATOR

PART NUMBER 12M03-00127



GENERAL DESCRIPTION

The MODEL 238 S-CURVE RAMP GENERATOR is a solid state function module that converts step changes in input to a linear timed ramp at the output but with the added capability of providing gradual onset (Soft Start) and ending (Soft Finish), each independently adjustable.

With suitable adjustment the output voltage as a function of time assumes an "S" shape. This type of acceleration pattern is useful in applications where the load may be sensitive to rapid changes in acceleration.

Advanced circuit design insures a high level of accuracy, noise immunity and reliability in industrial environments. A field-proven mounting arrangement provides reliable connection, but allows easy removal without disturbing permanent wiring. Front access and detailed technical manual makes installation and service easy.

The MODEL 238 S-CURVE RAMP GENERATOR can be used with other REFLEX® SERIES 200 CONTROL MODULES and POWER CONVERTERS for smooth, stepless control in many applications. It is compatible with equipment of other manufacturers.

FEATURES

- COMPACT, SELF-CONTAINED
- MODERATELY PRICED
- HIGH PERFORMANCE
- COMPATIBLE WITH EQUIPMENT OF OTHER MANUFACTURERS
- INDEPENDENT ADJUSTMENT OF ACCELERATION, SOFT-START AND SOFT-FINISH
- POSITIVE, FRONT ACCESS CONNECTIONS
- EASILY REMOVED, REPAIRED OR REPLACED
- CONSERVATIVELY RATED FOR RELIABILITY
- DETAILED TECHNICAL MANUAL

TYPICAL APPLICATIONS

- PROCESS LINES
- REWINDERS
- ELEVATORS

SPECIFICATIONS

SUPPLY: 120V AC $\pm 10\%$
50/60 Hz, Single Phase

AMBIENT TEMPERATURE: 0° to 40°C
(32°-104°F) 50°C in Cabinet

INPUT: $\pm 6V$ DC @ .6mA (10k OHMS)

OUTPUT: $\pm 6V$ DC @ 5mA
inverted or non-inverted

TIMING ADJUSTMENT RANGE: 12 Seconds Standard, adjustable over a 6 to 1 ratio. Easily reprogrammed for increased or decreased time.

OPTIONS

- COMPATIBLE WITH OTHER SERIES 200 CONTROLS (See Bulletin SB-200)
- SYSTEM APPLICATION DRAWINGS AVAILABLE

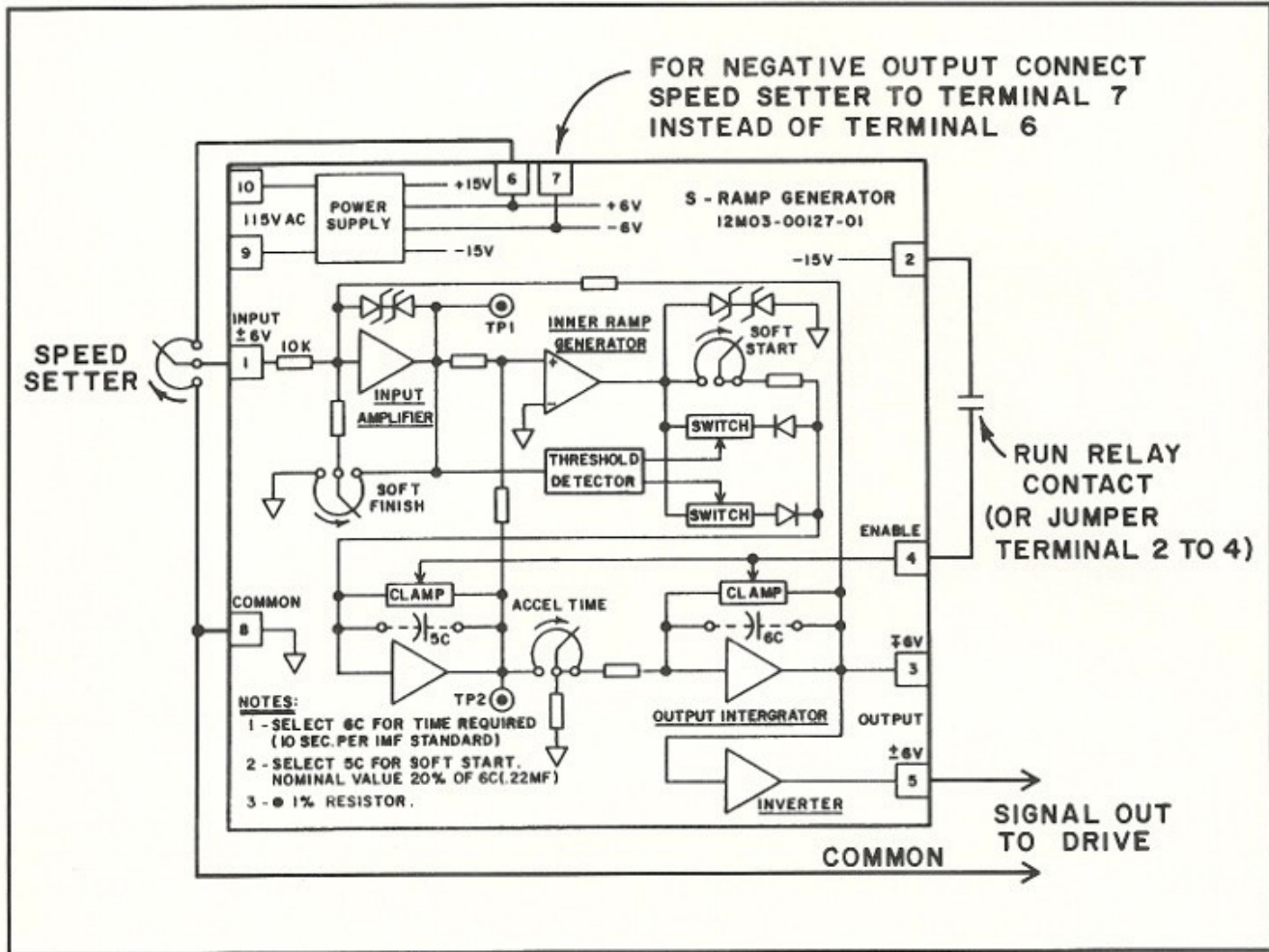


GEMINI CONTROLS LLC
W61 N14280 TAUNTON AVE.
PO BOX 380
CEDARBURG, WI 53012
www.geminicontrols.com

PHONE: (262)-377-8585
FAX: (262)-377-4920
email: sales@geminicontrols.com



MODEL 238 S-CURVE RAMP GENERATOR



MODEL 238 S-CURVE RAMP GENERATOR

PART NUMBER 12M03-00127-01
APPLICATION NOTES

1. The Model 238 Ramp Generator can be used anywhere a "linear" ramp is needed by turning the "Soft Start" and "Soft Finish" adjustments (1P and 2P) to zero (CCW).
2. The ramp adjustment range can be increased or decreased by increasing or decreasing the value of 6C. The time is nominally 12 seconds per microfarad.

The "Soft Start" is determined by the value of 5C, typically 20 to 50% of the value of 6C.

CAPACITORS 5C AND 6C MUST BE LOW-LEAKAGE FILM TYPE!

3. Minimum resistive load between terminal 6 or 7 and terminal 8 is 500 ohms (12mA).
4. Minimum reference voltage for full speed is limited only by a requirement for a 1mA input current to terminal 14. Higher voltages can be accommodated by adding external resistance.
5. If the external "Enable" circuit is not required, jumper terminals 2 and 4.